

**ErgoPerfect ergonomic supports are ideal for use during work and other physical activities. The unique properties of the neoprene blend provide compression, support and heat retention, which improves circulation, helps keep muscles and joints flexible and promotes healing.**

# ErgoPerfect® Body Supports



Hand Support

• \$19.95



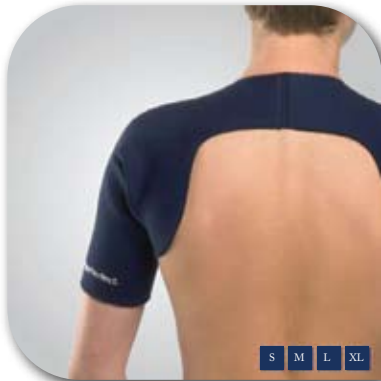
Wrist Support

• \$19.95



Elbow Support

• \$19.95



Shoulder Support

• \$29.95



Back Support

• \$39.95



Waist Support

• \$19.95



Knee Support

• \$19.95



Calf Support

• \$19.95



Ankle Support

• \$19.95

## ERGOMAT

[www.ergomat.com](http://www.ergomat.com)  
[info@ergomat.com](mailto:info@ergomat.com)  
 Tel. 877-374-6628  
 Tel. 440-282-4651



MATTING



DURASTRIPE



FURNITURE

## EP Body Supports

- Custom fit hook and loop strap allows maximal tension control and desired level of compression
- Provides firm support, compression and heat retention
- Improves circulation which helps keep your muscles pliable, thus helping to treat injuries and reduce susceptibility of new injury.
- Helps promote healing
- Custom fits and sizes to fit everyone
- Relieves muscle and joint pain
- Moisture releasing
- Does not impede movement

## Order Information & Return Policies

- For any orders under \$100.00 – handling fee of \$15.00
- For any order of 24 + units; in a single order, additional 5% rebate
- For any order of 50 + units; in a single order additional 5% rebate, transport is included
- For any order of 100 + units; call us!
- Returns accepted within 30 days only: 25% restocking fees – in the original, undamaged box.
- Please request an RMA# at [info@ergomat.com](mailto:info@ergomat.com) prior to any orders.

